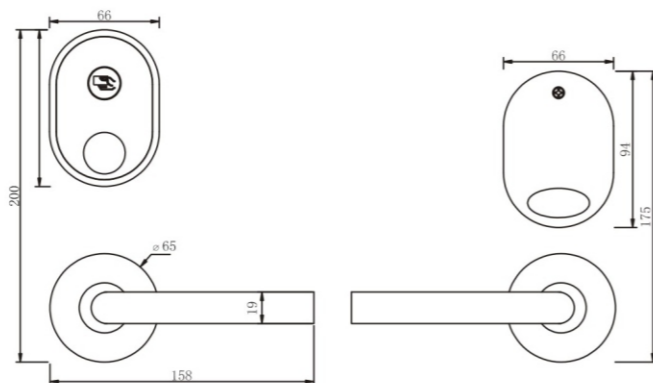


YGS9902 Hotel Electronic lock Series

Two-body electronic lock with RFID technology, with a careful design and modern aesthetics. Front cover and handles made of NO. 304 stainless steel. Ideal for new constructions or refurbishments.



FEATURES

- Electronic lock with Japanese "MABUCHI" motor durable for over 500,000 cycles.
- ANSI high security bolt with 3-point latch with anti-friction and anti-card mechanism in stainless steel.
- Anti-manipulation handle with free rotation, avoid forcing the opening lever.
- Ideal to replace old locks. It covers the brands of many models of locks on the market.
- Audit system with capacity to register up to 1000 events including openings with emergency keys.
- PCB sealed with silicon encapsulated treatment for high humidity environments.
- Software available in several languages. Standalone mode or centralized database.
- Mechanical emergency lock
- EEPROM memory to maintain the information and configuration even if the batteries are removed.
- Uses 4 standard AA batteries.

TECHNICAL PARAMETERS

Material: Stainless steel
 Finish: Stainless steel brushed/gold/black
 Power supply: 4 AAA alkaline batteries
 Battery life: Over 15000 cycles
 Static current : < 20 uA
 Dynamic current : < 150 mA
 Storage temperature : -25- + 58°C
 Storage humidity : 15-90% RH
 Working temperature : -25- + 58°C
 Working humidity : 15-90% RH
 Card reading distance : 0-5cm
 Reading & writing time : < 0.25s
 Date keeping : Over 10 years
 Applicable chip : Mifare 1 (13.56Mhz)



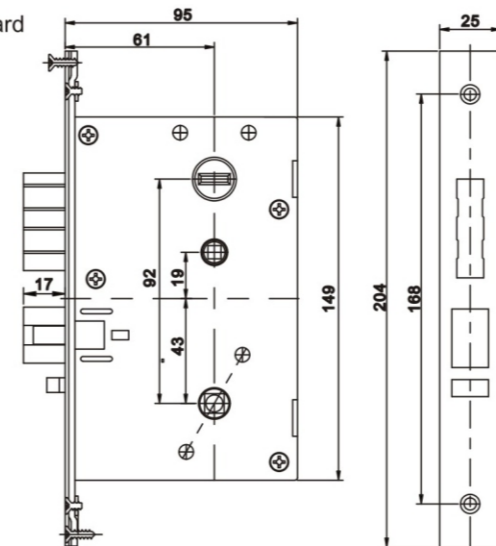
Emergency mechanical lock hidden behind a flap on the front. This lock allows to open the door without the need of a card in case of emergency. It will be helpful when the computer is broken or the lock in the state of misoperation.

Key-alike type and key-different type are optional.



MORTISE

ANSI Standard



(Unit:mm)



Confirmation indicator light that illuminates when any action is made on the lock.



Interior anti-panic latch. It retracts automatically when the door is opened from the inside.



If the battery power is running low, an automatic alert is activated via a red light that is displayed when reading keycard.

This signal is given months before the battery needs to be replaced.