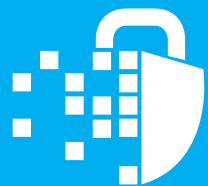


燕儿



We provide better service for you.



# F6 GLASS DOOR INTELLIGENT CLOUD LOCK

» An instruction  
manual

Please read this manual carefully before using  
the product and keep it for future use

## Matched App



### Software installation

IOS software can be downloaded from App store, Android software can be downloaded from app market such as Google play, Baidu, Ali, 360, Huawei, Xiaomi, etc.



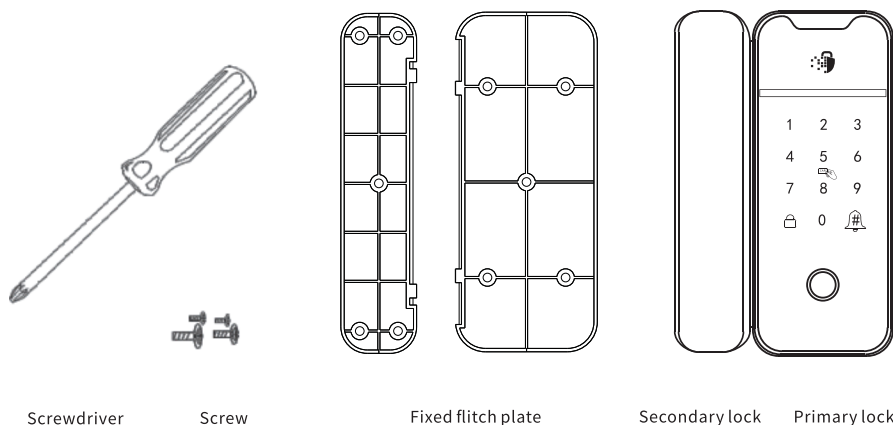
## Performance parameters

Bluetooth standard	Bluetooth 4.1 BLE	
Supported mobile phone system	Android 4.3/IOS7.0 above	
Power supply mode	4 alkaline dry batteries	
Low voltage alarm voltage	4.8V	
Voltage range	4.5~10V	
Standby current	65 microampere	
Working current	Maximum 200 mA	
Unlocking time	≈1.5 s	
Operating temperature range	-20~70°C	
Key type	Capacitive touch key	
Number of passwords	APP password sending	Unrestricted
	Custom password	150
Card type supported	MIFARE M1卡	
Number of IC card	200张	
Unlocking mode	App, password, fingerprint, IC card, remote controller, mechanical key	
Motor interface output voltage	Battery voltage reduced by 0.3V	
Fingerprint tip type	Semiconductor fingerprint tip	
Fingerprint capacity	120	
False alarm rate(FAR)	<0.001%	
False rejection rate (FRR)	<1.0%	

# Installation management

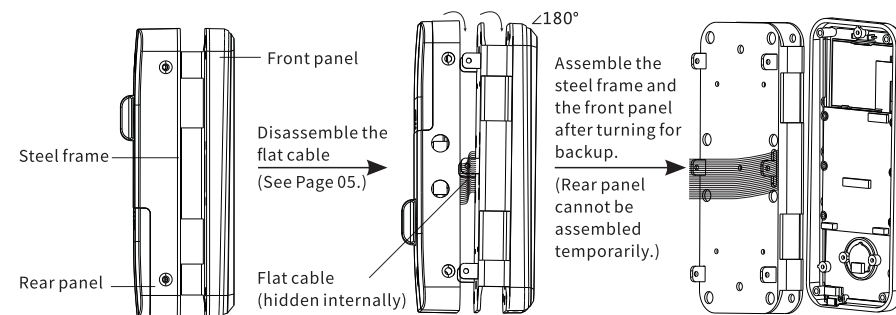
## Installation procedures

- Prepare a screwdriver before installation and auxiliary accessories for double door(ground plug).



- Select the appropriate installation for the intelligent lock and clean out the position surface (It is required that the surface is neat with no ash layer, water drop, etc.)
- It is necessary to turn the lock body steel frame and rear panel  $<180^\circ$  if the actual installation direction is inconsistent with the product default direction (The product is right open by default. You can skip this procedures if your installation direction is consistent.)

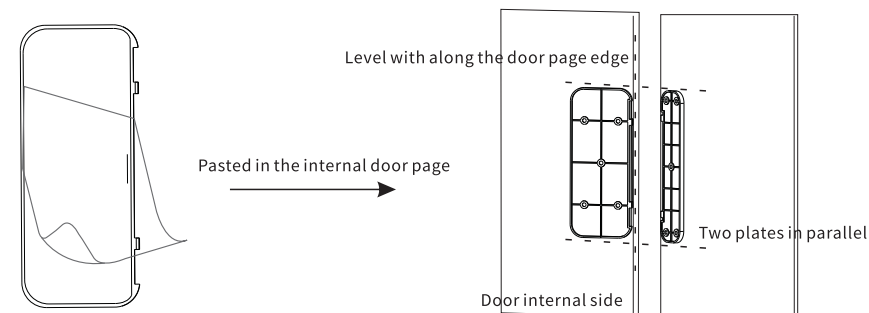
The principle of the secondary lock is similar to the primary lock. Let's take the primary lock as an example.



Remarks: Please pay attention to the flat cable connection when unscrewing the screws on the rear panel. Please disassemble the flat cable first, then connect it with the rear panel and conduct subsequent operation.

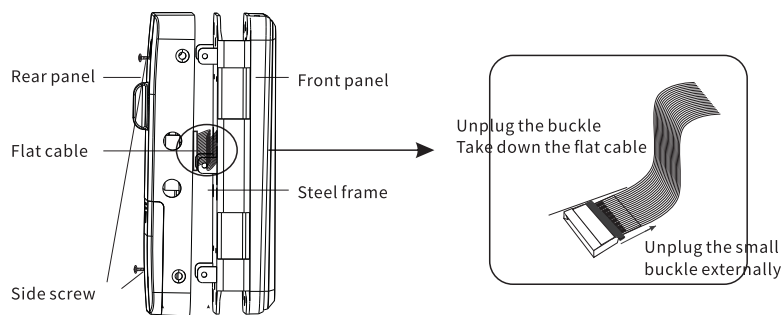
- Take down the fixed flitch plate, remove the protective paper and attach to the internal door page along the edge.

Notes: Align the flitch plate of the primary lock to the flitch plate of secondary plate. You can mark on the door page before the paste of the mounting plate.



- You can begin the installation of the lock body after the flitch plate is aligned. First unscrew the screws on the side of the lock body and then take off the rear panel.

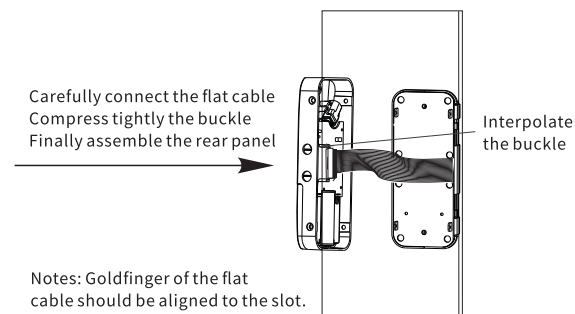
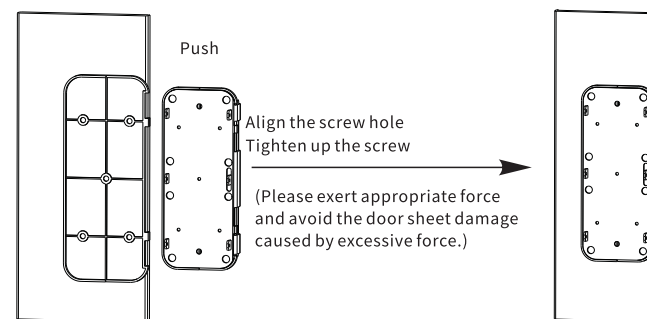
You can disassemble the flat cable if there is flat cable connection between the front panel and rear panel of the primary lock.



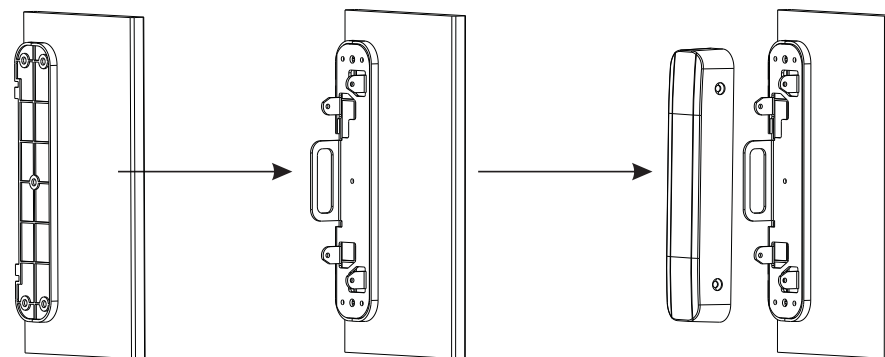
Notes: Prop the rear panel with your hands when unscrewing the screw and then take away the rear panel after the disassembly of the flat cable.

- Clamp the door page and flitch plat with steel frame U slot, tighten up the screw, connect the flat cable and finally reinstall the rear panel.

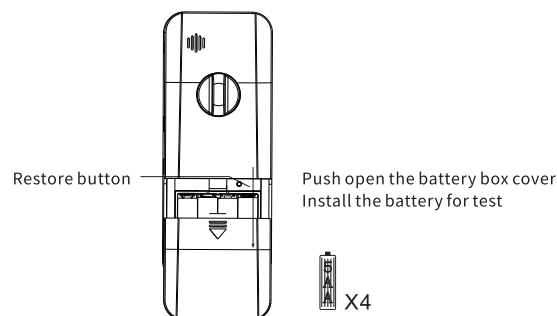
Notes: Align the screw hole. Tighten up the screws with appropriate force in order to prevent the door sheet damages due to excessive force. Connect the flat cable carefully. Compress tightly the buckle. Assemble the rear panel and tighten up the screw finally.



The installation principle of the secondary lock is similar. Please refer to the figure below.



- Install the battery for the test after installation.



Test: Gently touch the screen buttons after battery installation (press any key for wake up) and see whether there is any reflection. Please carry out the following procedures if there is no reflection.

1. Please open the battery box cover and check the battery (A. Make sure that the battery has power. B. Whether the battery “+” “-” are corresponding. C. Check whether the battery is loose or has deviation.)

2. Please disassemble the rear panel of the primary lock and see the flat cable (A. Flat cable loosening or falling off. B. Flat cable is inserted in error direction. C. Check whether the goldfinger at both ends of the flat cable is damaged or not.)

3. Please apply for the shootshooting, installation and other after sales from the professional personnel of the sales department.

- You can open the intelligent lock product for a comfortable experience after test.

## Locking operation

Function	Operation
1. Restore the factory settings	Long press the reset key locked. You can input 000# after hearing “Please input the initialization password.”. The lock will restore the factory setting and clear all fingerprints, password, card and mobile phone administrator.
2. Administrator password setting	You can input 123456# after locking if you do not set the administrator password or add mobile phone administrator. You can input 12# ->, new administrator password# -> and the same password again after unlocking success. Notes: You do not need this procedures for mobile phone App management.
3. Administrator password modification	Select lock->click setting-> click “administrator unlocking password” ->input new administrator password in App. Notes: Please carry out operation on the edge of the lock.
	Input the original administrator password # in the lock keyboard, and 12# new administrator password# same new administrator password# and modify the administrator new password.
4. Mobile phone administrator adding	You can administrator password# locked if you set the administrator password or add the mobile phone administrator. Input 83# and administrator password after unlocking success. It will be locked again and enter the mobile phone administrator adding mode. Other App accounts can add these locks and become new administrators. Notes: The lock in this previous account will be automatically deleted after new App account adding of administrator. In other words, there is only one first level mobile phone administrator.

5.Mobile phone administrator deletion	You can select the lock of mobile phone administrator deletion, click setting and delete.
	Notes: The lock restores the factory setting after deleting the administrator in the App. The previous fingerprints, password and card will be invalid.
6.Fingerprint adding	Click “fingerprint” ->add fingerprint->input the fingerprint name and validity period ->click the next step->click start adding->press the fingerprints for several time on the finger reader according to the prompt of mobile phone screen and voice prompt.
	Input administrator password and 85# after unlocking. Press the fingerprints for several time on the finger reader according to the voice prompt.
	Notes: You can directly add fingerprint on the lock and upload it to app for management through the “upload lock fingerprint” function. You can continue to add other fingerprints after fingerprint addition success after locking or exit the adding mode after waiting overtime.
7.Fingerprint delete	Click fingerprint ->click the fingerprint to be deleted->click delete in App. Notes: You must operate on the edge of the lock.
	Input the administrator password# after locking. Input 70#, administrator password after unlocking and delete all fingerprints.
8.Rename fingerprint	Click “fingerprint” ->click the fingerprint to be renamed->click name->input new name

9.Fingerprint validity period modification	Click “fingerprint” in app->click the fingerprint in validity period to be modified->click validity period->click new validity period->click save Notes: Fingerprint can be used for unlocking in specified validity period after the validity of setting. You must operate on the edge of the lock.
10.Password adding	Click “acquire password” in App-> select password type: customization->select validity period->click password setting->input the password to be added. Notes: You can operate the “ custom” password on the edge of the lock.
	Click “acquire password” in App-> select password type: Permanent/time limit/single time/ clear/cycle->click acquire password Notes: We cannot operate on the edge of the lock for these type of password. Password clear is used for the delete of all valid passwords.
	Input administrator password. Input 85# and password# to be added after unlocking success->input the same password again. Notes: You can add the password on the lock directly, upload the password in App password management and upload the password to App for management You can continue to add other passwords after success addition of password or exit the adding mode after waiting overtime.
11.Password delete	Click “password management” in App->click the password to be deleted->click delete Notes: You must operate on the edge of the lock.
	Input the administrator password#. Input 71# and administrator password again after unlocking and delete all unlocking password (Do not delete the administrator password.

12.Password modification	Click “password management” in App->click the password to be modified->click password->click new password. You must operate on the edge of the lock.
	Input the administrator password# on the lock. Input 10 #original password #new password# password modification after unlocking.
13.Rename password	Click “password management” in App->click the password to be renamed->click name->input new name
14.Validity period of modified password	Click “password management” in App->click the password to be modified with validity period ->input new validity period->click save. You must operate on the edge of the lock.
15.IC card/remote controller adding	Click "IC card" -> on the App to add IC card -> input name and select expiry date -> click ok, then swipe the card or press the remote control to add.Note: must be operated on the lock.
	Input administrator password# and 85# after unlocking. Swing card or press remote controller for adding according to voice prompt. Notes: IC card/remote controller directly added can be in the IC card in APP->upload the IC card and upload IC card/remote controller to App for management. You can continue to add other IC card/remote controller after adding IC card/remote controller success directly or exit the adding mode after waiting overtime.

16.IC card/remote controller delete	Click “IC card” in App->click the card/remote controller to be deleted->click delete Notes: You must operate on the edge of the lock.
	Input the administrator password# and 69# after unlocking. Then input the new administrator password and delete all IC card/remote controller.
17.Rename IC card	Click “IC” card in App->click IC card to be renamed->click name->input new name
18.Modify IC card validity period	Click “IC card” in App->click the validity period of IC card to be modified->click validity period->input the new validity period ->click save. Notes: You must operate on the edge of the lock.
19.Unlocking	App unlocking: Click the icon in App for unlocking. Notes: You must unlock on the edge of the lock or have remote unlocking after the remote unlocking function is turned on.(Remote unlocking is OFF by default.)
	Touch unlocking: Open App when App starts “touch unlocking”. Touch the lock unlocking.
	IC card unlocking: Place the IC card added to the card swing area for unlocking.
	Fingerprint unlocking: Press the added fingerprint for unlocking in finger reader.
	Password unlocking: Input the unlocking password in the password keyboard and press # key for unlocking. Notes: The default unlocking password with no administrator is 123456.
Remote controller unlocking: Press the remote controller unlocking key for unlocking.	

20.Locking	Press + key for locking in constant NO mode.
21.App key	Click “key sending” in App and send electric key to other users. You can authorize the electric key to make it become secondary administrator.
22.Unlocking record view	Select door lock in App and click operation record for view. Notes: You can view the fingerprint/IC card/password unlocking record through App if there is no gateway.
	You can view all the records of fingerprint/IC card/ password by clicking a certain fingerprint/IC card/password or clicking operation record.
23.Virtual password	You can add other digits after inputting the correct password. The total length of the virtual password is 16 bits.
24.Password input error protection	The system will lock the password keyboard if you input the unlocking password continuously for five times. It will eliminate the locking status after 5 minutes overtime. Correct fingerprint, IC card, APP and remote controller unlocking can eliminate keyboard locking status in locking period.
25.Low power prompt	Touch the panel in ON status if the battery voltage is less than 4.8V. Please replace the battery if there is a voice prompt “insufficient power and the screen backlight flashes for 1s at the same time. Please replace the battery and then unlock it if there is a voice prompt “insufficient power.

26.Tamperproof alarm	The loudspeaker will give out an alarm sound for 1 minute after trigger the switch if it is installed with tamperproof lock. Turn off tamperproof alarm: Input the administrator password after locking and then input 32#0# after unlocking. Turn on tamperproof alarm: Input the administrator password # after locking and input 32#1# after unlocking. Notes: The administrator password can be replaced by123456 if we do not add administrator.
27.Firmware upgrade	We can have firmware upgrade of the lock through App. Click setting in APP -> locking upgrade of the upgrade of new firmware. Notes: You must operate on the edge of the lock.
28.Presentation mode	The presentation mode is OFF by default. You can input 24679# to turn on the presentation mode if you do not add administrator. Any fingerprint or password 123456 can be used for unlocking when the presentation mode is turned on. The demonstration mode will be automatically shut off when you set administrator password or add mobile phone administrator.
29.Locking sound	Turn off the locking sound in APP. The screen will flash after touching the keys and the locking sound is turned off. It gives a prompt that users press the key.
30.Voice switch	Chinese voice: Input administrator password# after locking and input 39#1# after unlocking. English voice: Input administrator password# after locking and input 39#2# after unlocking. Notes: Administrator password can be replaced by 123456 if you do not add administrator.
31.Locking error prompt	It will give an alarm if you fail to attempt locking operation for three times continuously.